

EMERGENCY

Quali strumenti per misurare la performance ospedaliera usate e avete usato nella vostra esperienza, in un contesto di sistema sanitario a risorse limitate? Questi strumenti sono quelli proposti dal Ministero locale?

Il ruolo dell'ospedale nella primary Health Care.
Pisa, 2 marzo 2018





Lineeguida





Training staff locale





Statistiche



EMERGENCY Life Support for Civilian War Victims

Paediatric Centre of Mayo, Sudan

Overall activity 2018

Total OPD + CHP	0
OPD (New consultations and Follow-up)	0
Children seen by CHP	0
Total newborn seen in PNC	0

Total OBI admissions - Ricoveri day hospital	0
---	----------

Total Patients referred to hospitals - Pazienti trasferiti in ospedali	0
---	----------

Total outreach beneficiaries - Beneficiari dell'outreach	0
---	----------

Total patients seen by midwife - Pazienti viste da ostetrica	0
---	----------

Since the beginning of the activities in December 2005

Total patients treated

264.249

Total OPD visits - Visite ambulatoriali	222.424
OPD (New consultations and Follow-up)	191.981
Children seen by CHP	30.443
Total newborn seen in PNC	2.738

Total OBI admissions - Ricoveri day hospital	20.016
---	---------------

Total Patients referred to hospitals - Pazienti trasferiti in ospedali	11.680
---	---------------

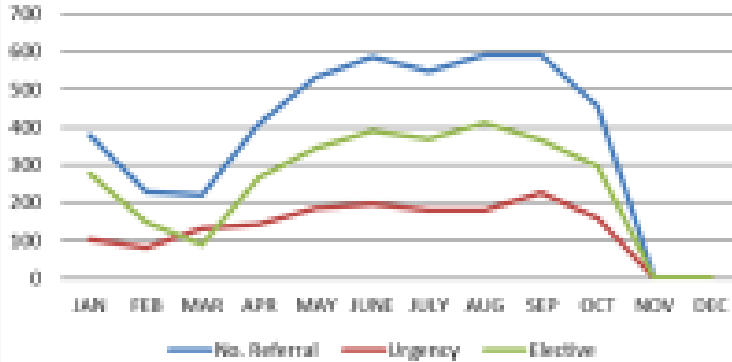
Total outreach beneficiaries - Beneficiari dell'outreach	48.596
---	---------------

Total midwife consultations - Visite prenatali e di pianificazione familiare	19.071
---	---------------

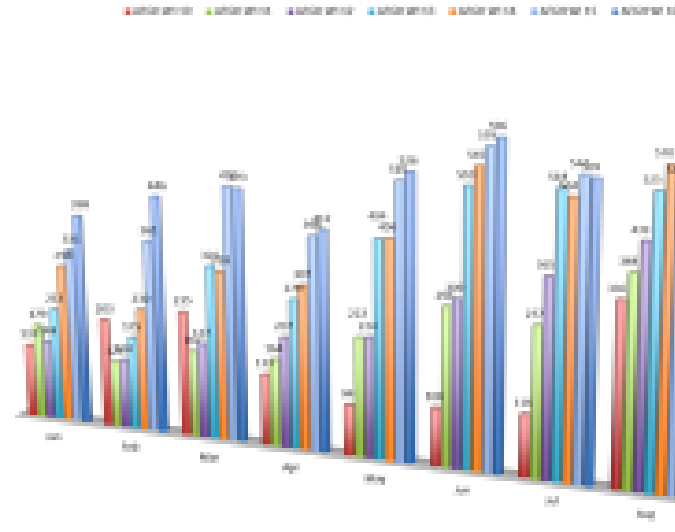


Sistemi di monitoraggio e controllo

Referrals



ADMISSIONS BY MONTHS



MONTH	CANCER SURVIVORS						TOTAL SURVIVORS						TOTAL SURVIVORS		
	0	1	2	3-4	5-6	7-8	0	1-2	3-4	5-6	7-8	9-10			
Jan	87	87	17	14	155	11	147	11	186	0	11	85	0	32	15
Feb	88	88	1	27	157	0	158	41	186	18	14	51	1	14	20
Mar	88	88	17	45	187	0	188	35	223	28	122	25	0	8	28
Apr	88	75	11	25	199	10	248	35	235	7	117	88	28	38	128
May	88	88	41	27	181	0	181	44	188	18	148	78	28	0	10
Jun	88	88	15	48	173	17	188	25	188	14	117	108	28	17	102
Jul	88	88	18	58	182	7	188	58	188	23	148	108	28	10	118
Aug	88	88	44	58	188	1	188	11	188	52	188	108	18	10	108
Sep	87	87	11	28	188	4	188	88	188	48	108	108	28	18	128
Oct	88	88	11	28	188	11	188	14	188	14	117	108	12	18	148
Nov	88	88	11	27	188	11	188	11	188	18	11	88	0	1	108
Dec	88	88	11	28	188	0	188	11	188	11	11	88	1	1	108
TOTAL	1478	88	142	353	1888	110	1888	440	1888	353	1478	1888	110	148	110

TOTAL ADMISSIONS	# of all admissions (including transfers)	OPERATION #/100	# OF ALL ADMISSIONS (including transfers)	OPERATION #/100	TOTAL	Number of Beds	Occupancy rate	Patient days (PD)	Average length of stay (ALOS)	Patient days (PD)	Average length of stay (ALOS)	Rate occurrence ratio
188	188	1.52	0	0.42	0	84	81	1328	88.8	1888	11.4	88.88
188	188	1.78	0	0.58	0	88	84	1358	88.7	1888	11.4	88.88
188	188	1.78	0	0.58	0	84	81	1328	88.8	1888	11.4	88.88
188	188	1.82	7	0.78	10	84	84	1377	88.8	1888	11.4	88.88
188	188	1.82	7	0.78	14	88	84	1388	88.8	1888	11.4	88.88
188	188	1.88	12	0.88	18	84	88	1398	88.8	1888	11.4	88.88
188	188	1.78	0	0.58	18	110	81	1388	88.8	1888	11.4	88.88
188	188	1.88	0	0.88	18	110	81	1388	88.8	1888	11.4	88.88
188	188	1.88	0	0.88	20	110	88	1377	88.8	1888	11.4	88.88
188	188	1.88	4	0.88	20	110	81	1388	88.8	1888	11.4	88.88
188	188	1.88	0	0.88	1	110	88	1388	88.8	1888	11.4	88.88
188	188	1.88	0	0.88	1	110	81	1377	88.8	1888	11.4	88.88
188	188	1.88	0	0.88	1	110	81	1377	88.8	1888	11.4	88.88
188	188	1.88	0	0.88	1	110	81	1377	88.8	1888	11.4	88.88
188	188	1.88	0	0.88	1	110	81	1377	88.8	1888	11.4	88.88





Questionario assessment Mayo



Pubblicazioni scientifiche, tesi specialità



EMERGENCY

Quali sono gli ostacoli che, nella vostra esperienza, condizionano negativamente la performance ospedaliera in termini di sostenibilità finanziaria?

Il ruolo dell'ospedale nella Primary Health Care
Pisa, 2 marzo 2018



The Manifesto for a Human Rights Based Medicine

We therefore advocate the implementation of health systems and projects solely devoted to preserve, extend and improve the life of the people in need and based on the following principles:

Equality - Quality - Social responsibility



Our approach

International Workshop

Building Medicine in Africa Principles and strategies



*VENICE, SAN SERVOLO
MAY 14-15, 2008*



“In accordance with the spirit and the principles of the Universal Declaration of Human Rights...”



Gratuità delle cure

OUT PATIENTS DEPARTMENT	
REGISTRATION FEES	LE 1,000
EXAMINATION FEES	5,000
MINOR SURGICAL PROCEDURES	8,000
OBSERVATION	2,000 PER DAY. MAX 2 DAYS
RE-VISIT	2,000

KEEP MATCHES OUT OF THE REACH OF CHILDREN



SURGICAL FEES	
REGISTRATION	LE 1000
EXAMINATION	10,000
FOLLOW UP	5,000
MINOR SURGERY - LUMP	60,000 80,000
- ABSSESSES	
- SUTURING	
- POP FOR FRACTURE	
- SUPRAPUBIC CYSTOSTOMY	
- BOUGINAGE	
- THORACOCENTESIS	100,000
SPECIAL INVESTIGATIONS - CYSTOSCOPY	
- GASTROSCOPY	
- SIGMOIDOSCOPY	150,000 170,000 220,000 200,000
INTERMEDIATE OPERATIONS - APPENDICECTOMY	
- HERNIORRAHAPHY	
- DOUBLE HERNIA	
- SEQUESTRECTOMY	300,000 400,000
MAJOR PROCEEDINGS - MASTECTOMY	
- OPERATION KIDNEY	
- SPLEEN	
- GALL BLADDER	
- LAPARATOMY	
- BOWEL RESECTION	
- VAGATOMY & DRAINAGE	
- SIMPLE OSTEOSYNTHESIS	
- AMPUTATION ON LIMBS	
- THYROIDECTOMY	
- PROSTACTECTOMY	



The world of EMERGENCY

Updated to December 2016



INTERNATIONAL STAFF

395 professionals
worked on the field
with us in 2016



NATIONAL STAFF OF OUR HUMANITARIAN PROJECTS

2.468 people



VOLUNTEERS

3.000 people in Italy
and around the world

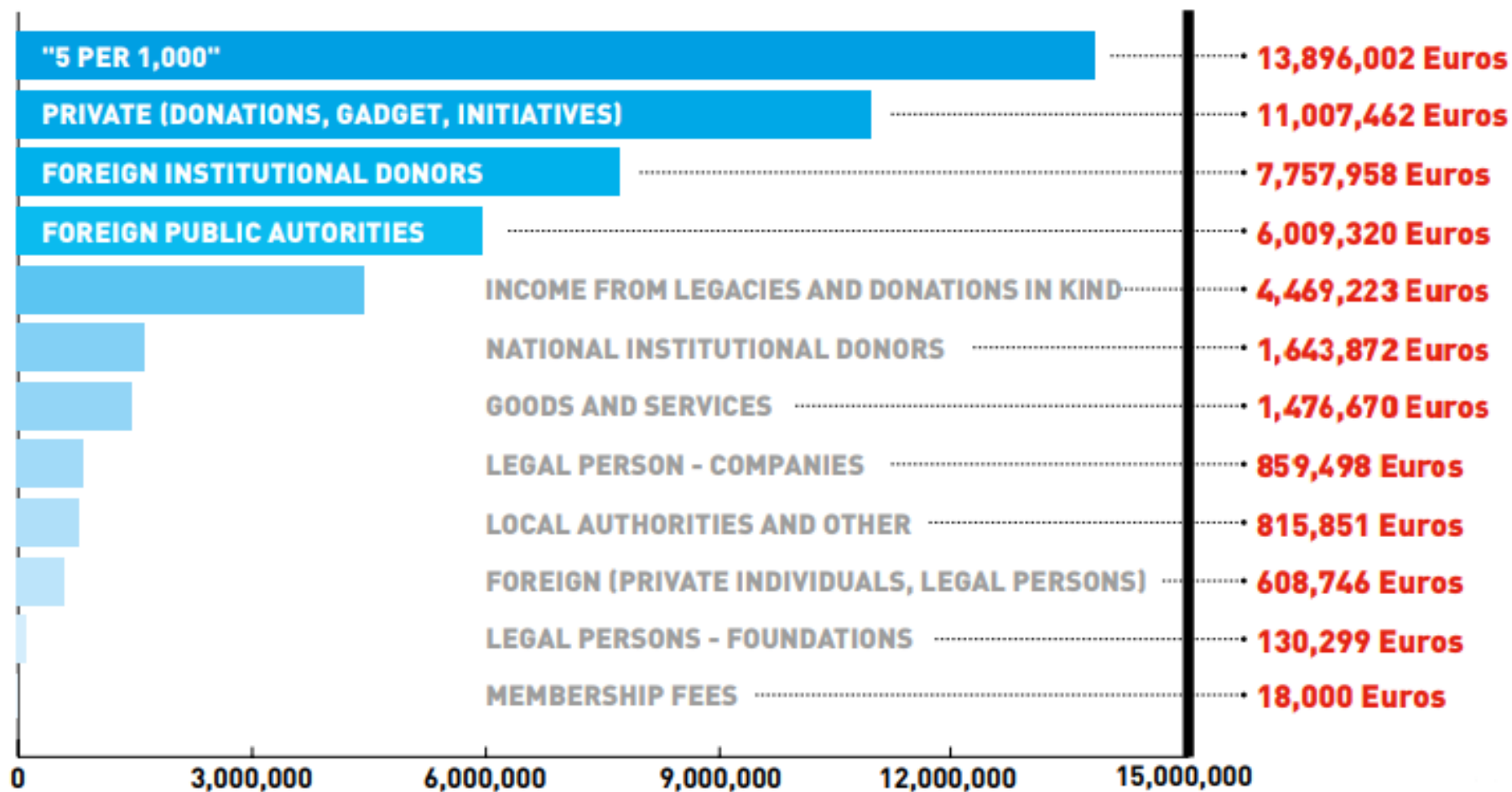


PAID STAFF IN ITALY

132 people in our
Milan, Rome and Venice offices



Our sources of funding



How we use our funds



Source: 2016 Balance Sheet



Grazie per l'attenzione!

